

- SAFETY PRECAUTIONS:

1. Keep this product and its charging cable away from excessive heat.
2. Do not operate this device with a damaged cable or after it has malfunctioned or has been damaged in any manner.
3. Do not disassemble this product.

TECHNICAL SPECIFICATIONS:

General Headset Features

Standard	Bluetooth Specification V5.0
Bluetooth® Headset Profile	Support
Bluetooth® Hands Free Profile	Support
Bluetooth® A2DP Profile	Support
Bluetooth® AVRCP Profile	Support
Support TWS	Support
Theoretical range in open field	<10m without obstruction
Re-program the firmware	None
Battery	3.7V, 55mAh Lithium polymer Battery (type)
Stand By (Paired mode)	100hrs
Talk Time	6
Battery Charging Case	500mAh Charging time <2 hours

TURN EARBUDS OFF AND ON:

POWER ON:

Open the Charging Pod and take out the earbuds. You will hear a 'Power On' prompt and the LED indicator atop each earbud will pulse softly.

POWER OFF:

Simply place the earbuds back into their respective slots and the earbuds will power off automatically. The LED indicator will first flash rapidly and then begin to softly pulse to indicate charging.

PLEASE NOTE:

When the charging pod is out of battery, the earbuds will not turn on/off automatically when removed from or placed back into the charging pod. In this case, please recharge the charging pod.

THE EFM® 2 YEAR WARRANTY:

Our goods come with guarantees that cannot be excluded under the Australian Consumer Law. You are entitled to a replacement or refund for a major failure and compensation for any other reasonably foreseeable loss or damage. You are also entitled to have the goods repaired or replaced if the goods fail to be of acceptable quality and the failure does not amount to a major failure.

EFM® will happily repair or replace defective goods for up to 2 years from the date of purchase. This warranty is against defects in the EFM® goods purchased and does not cover damage caused by the incorrect use or installation of the goods, or by modifications, or by accident.

To claim under the warranty, you need to return the faulty product to the place of purchase (at your expense) with a valid proof of purchase. If you are not able to return the product to the place of purchase, you can contact:

EFM Service Department
61 Belmont Avenue, Belmont WA 6104
P: 1300 069 336 (1300 0 MYEFM)
E: info@myefm.com

This warranty is in addition to other rights and remedies of the consumer under Australian Consumer Law for Consumer Electronic Devices and Home Entertainment Products.

Important:

The 2 Year Warranty covers EFM® product and not your device. Whilst we stand by our products, EFM® will not be liable to any damages caused to your device from accidental impact.

For more information visit myefm.com



**EFM MONTSERRAT
TRUE WIRELESS STEREO HD
EARBUDS USER'S MANUAL**



INTRODUCTION:

Thank you for choosing the EFM® Montserrat TWS HD Earbuds! You can use this product with all iOS and Android compatible Bluetooth® devices to stream music and enjoy hands-free calling. In order to get the best results when using these earbuds, please read this manual first.

PACK CONTENTS:

- 1 x EFM® Montserrat TWS (True Wireless Stereo) HD Earbuds
- 1 x TWS Charging pod
- 1 x USB Charging cable
- 1 x User manual
- 3 x Earbud tips (Sizes: Small / Medium / Large)

SPECIFICATIONS:

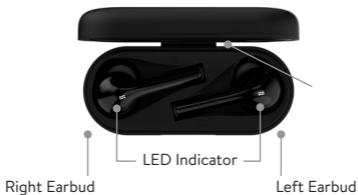
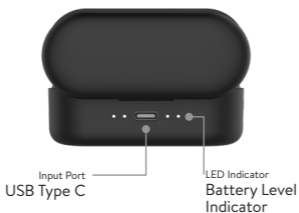
- Frequency response: 20Hz-20KHz
- Sensitivity: 93±3dB
- Impedance: 16Ω±15%
- Driver: 6mm Dynamic

FEATURES:

- IPX6 Resistance to rain and sweat
- Hands-free function
- 4 hours music and talk time
- Wireless microphone / Tap touch control (10m range)
- Voice commands: Activate Siri or Google Assistant

OVERVIEW DIAGRAM:

Charging Pod



HOW TO USE/GENERAL FUNCTIONS:

Desired Result	Required Action
Power On	Simply remove earbuds from the Charging Pod, the earbuds will automatically go into pairing mode.
Power Off	Place earbuds into the Charging Pod.
Pairing	<ol style="list-style-type: none">1. Activate the Bluetooth® function on our device and select 'EFM Montserrat'. The earbuds will automatically pair with the device.2. Press the 'YES' soft key on the phone to connect to the headset, pairing is successful.3. Earbuds distance range up to 10 metres and working range is 180 seconds.
Play / Pause	Double tap the L/R Touch Control Button.
Next Track	Touch Right Touch Control Button for 2 seconds.
Previous Track	Touch Left Touch Control Button for 2 seconds.
Answer Phone Call	Single tap the L/R Touch Control Button when a call is incoming.
End Current Call	Single tap the Touch Control Button during a call.
Reject Incoming Phone Call	Touch L/R Touch Control Button for 2 seconds when a call is incoming.
Activate Voice Assistant	Triple tap the L/R Touch Control Button.

General Notes:

Resetting Earbuds

If you have problem to connect the earbuds with your mobile phone, try resetting your EFM Montserrat device as below;

1. Make sure Bluetooth is turned off on your device.
2. Take out both earbuds from charging pod, when they pair together successfully, you will hear a soft tone.
3. Touch and hold the TCB on both earbuds for 10 seconds until you hear a tone. This means that the earbuds have been reset to as when they left the factory.
4. Follow the instructions to reconnect your mobile device.

CHARGING YOUR MONTSERRAT TWS EARBUDS:

Please use the provided USB cable to connect your Charge Pod to a source of sufficient power via the Micro USB port at the back of the Charging Pod.

1. CHARGING THE POD

The LED Status Indicators on the back of the Charging Pod will flash white when charging and stay lit when the Pod is full.

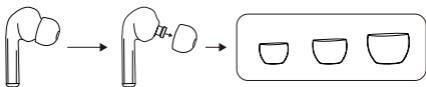
2. CHARGING THE EARBUDS

When the earbuds are inserted into the Charging Pod, the white LED indicator on each earbud will light up white and will go off to indicate that the earbud is full.

CHARGING STATUS	
Earbuds	LED will disappear when fully charged.
Charging Pod	LED will stay lit when fully charged.

WEARING YOUR EARBUDS:

The earbuds come with comfortable silicone buds for your everyday use. Try all the different size earbuds that are provided in the package to find the best fit for your ears. You can get the best audio quality when the earbuds seal your ear canal.



NOTE: Your left and right ears may need different size earbuds. Insert the earbuds with the earbuds directed towards your ear canal. Twist gently until they fit comfortably and feel secure in your ears.



CONNECTING EARBUDS TO YOUR PHONE:

1. Take the earbuds from the charging pod to enter pairing mode.
2. Turn on Bluetooth® on your phone and select '**EFM Montserrat**' to pair with this earphone.
3. When the earbuds are not in the charging pod, and are powered off, simply put the earbuds back into the charging case and take them out again. The earbuds will automatically enter pairing mode.
4. After this earphone is successfully paired with your phone, TWS can remember up to three Bluetooth devices. You just need to repeat the above steps to pair with another Bluetooth device. The earbuds will only automatically connect with the last paired Bluetooth device.