



AUTOMATIC CONNECTION:

Now you have properly set up your earbuds, they will connect to your phone automatically from now on.



Auto Connect

Earphones are automatically connected to your phone when you pull them out of the charging pod.

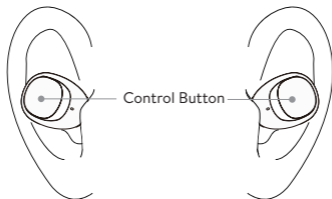
Auto Off

Earphones are turned off automatically when you put them into the charging pod.

LISTENING TO MUSIC:

Now you have properly paired and connected your earbuds to your phone, the rest is easy. To play music, launch your favourite music player app (eg. Spotify, Apple music etc) and start playing your songs.

1. To pause music, click the button on MFB earphone once.
2. To resume music, long press the button on the MFB earphone.
3. Next tracks, Long press the button on the RMFB



4.

CALLS & VOICE COMMANDS:

When earbuds are connected to your phone, you can answer and control the incoming calls.

Answer / End a Call

When a call comes in while you are wearing the earbuds, you will hear a notification sound from your earphone.

1. To answer a call, click the button on the earphone once.
2. To end a call, click the button once again.
3. To transfer a call during call mode, press and hold button for 2 seconds.

Click Action	Phone call
Single click	Answer or end a call
Press & Hold 2 seconds	Transfer call during call mode

VOICE COMMANDS:

Double click the MFB earphone to activate Siri or Google Assistant. You will hear 'Voice Dial' prompt from the earphone. You can start dictating commands to Siri or Google Assistant.

Click Action	Phone call
Double click	Activate Siri or Google Assistant

TURN EARBUDS OFF AND ON:

There are two ways you can turn the earbuds Off/On: WITH charging pod and WITHOUT the charging pod.



The easiest way to turn earbuds on/off is with the charging pod.

Turn Earphones Off/On WITH Charging Pod

To turn off the earbuds, put earbuds back into charging pod.

Turn Earphones Off/On WITHOUT Charging Pod

You can turn earbuds on/off without using the charging pod.



To turn off earbuds, press and hold the button on either of the earbuds for 5 seconds until you hear 'power off' voice prompt from both earbuds. Both earbuds will turn off together.



To turn on earbuds, press the button on BOTH earbuds once you will hear 'power on' voice prompt from both earbuds.

REPLACEMENT WARRANTY REGISTRATION INSTRUCTIONS:

1. Register your product along with your proof of purchase (receipt) within 14 days at www.myefm.com/register.
2. If you have any issues with your registered product during the warranty period, complete the Warranty Claim form, including any images of the fault, at www.myefm.com/warranty.
3. We will review your claim and, if approved, please send your faulty product back to us (at your cost) Upon receipt your free replacement product will be sent to you free of charge anywhere within Australia.

*Please Note: Only products registered within 14 days of purchase with a valid receipt are eligible for the EFM Registered Warranty Program.

This program covers EFM products only, not devices and/or device parts. The 2 Year free replacement warranty is limited to 1 replacement per verified proof of purchase registration.

REPLACEMENT WARRANTY DETAILS:

Our goods come with guarantees that cannot be excluded under Australian Consumer Law. You are entitled to a replacement or refund for a major failure and for compensation for any other reasonably foreseeable loss or damage. You are also entitled to have the goods repaired or replaced if the goods fail to be of acceptable quality and the failure does not amount to a major failure (defective goods). EFM will repair or replace such defective goods for up to 2 year from the date of purchase. This warranty is against defects in the goods purchased and does not cover damage caused by the incorrect use or installation of the goods, or by modifications, or by accident. To claim under the warranty you need to return the product to the place of purchase (at your expense) with a valid receipt or other proof of purchase. If you are not able to return the product to the place of purchase you can contact:

EFM Service Department
61 Belmont Avenue, Belmont WA 6104
P: 1300 069 336 (1300 0 MYEFM)
E: info@myefm.com

This warranty is in addition to other rights and remedies of the consumer under Australian Consumer Law for Consumer Electronic Devices and Home Entertainment Products.



TWS VALHALLA TRUE WIRELESS STEREO HD EARBUDS USER'S MANUAL



INTRODUCTION:

Thank you for choosing the EFM® TWS Valhalla Wireless HD Earbuds! You can use this product with all IOS and Android compatible Bluetooth® devices to stream music and enjoy handsfree calling. In order to get the best results when using these earbuds, please read this manual first.

PACK CONTENTS:

- 1 x EFM® TWS Valhalla (True Wireless Stereo) HD Earbuds
- 1 x TWS Charging pod
- 1 x 0.5m USB Charging cable
- 1 x User manual
- 3 x Earbud tips (Sizes: Small / Medium / Large)

SPECIFICATIONS:

- Frequency response: 20Hz-20KHz
- Sensitivity: 91±3dB
- Impedance: 16Ω±15%
- Driver: 6mm dynamic

FEATURES:

- IPX5 Resistance to rain and sweat
- Handsfree function
- 180 hours standby time / 5 hours music and talk time
- Wireless microphone / multi-function control (10m range)
- Voice commands: Activate Siri or Google Assistant

- SAFETY PRECAUTIONS:

1. Keep this product and its charging cable away from excessive heat.
2. Do not operate this device with a damaged cable or after it has malfunctioned or has been damaged in any manner.
3. Do not disassemble this product.

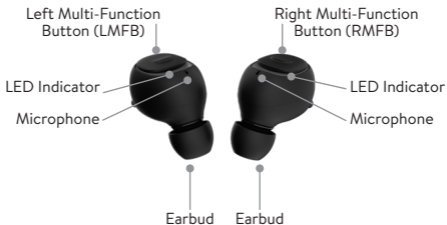
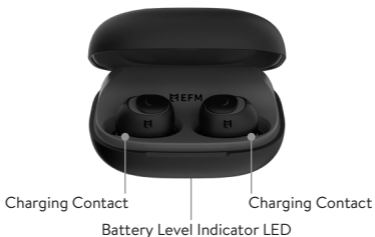
TECHNICAL SPECIFICATIONS:

General Headset Features

Standard	Bluetooth Specification V5.0
Bluetooth® Headset Profile	Support
Bluetooth® Hands Free Profile	Support
Bluetooth® A2DP Profile	Support
Bluetooth® AVRCP Profile	Support
Support TWS	Support
Theoretical range in open field	>10m without obstruction
Re-program the firmware	None
Battery	3.7V, 60mAh Lithium polymer Battery (type)
Stand By (Paired mode)	180hrs
Talk Time	4-5 hours
Battery Charging Case	2200mAh Charging time < 3.5 hours

OVERVIEW DIAGRAM:

Charging Pod



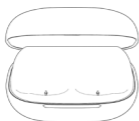
HOW TO USE/GENERAL FUNCTIONS:

Desired Result	Required Action
Power On	Simply remove earphones from the Charging Pod, if the earbuds are off, single press the L/R MFB to turn back on, the earphone will automatically go into pairing mode.
Power Off	Place earphones into the Charging Pod or press and hold for 4 seconds.
Pairing	<ol style="list-style-type: none">1. Activate the Bluetooth® function on our device and select EFM TWS Valhalla. The earbuds will automatically pair with the device.2. Press the 'YES' soft key on the phone to connect to the headset, pairing is successful.3. Earphones distance range up to 10 metre and working range is 180 seconds.
Play / Pause	Single click the Multi-Function Button.
Resume Track	Long Press L or R MFB for 1-2 seconds.
Make Phone Call	Double click the Multi-Function Button for 2 seconds to activate Voice Commands.
Answer / End Call	Press & Hold MFB for 2 seconds when call is incoming.
Transfer Call Voice	To transfer call during call mode, press & hold Multi-Function button for 2 seconds.
Receiving Call	Single click the Multi-Function Button.
Reject Microphone Call	Press & Hold the Multi-Function Button for 2 seconds
General Notes	<ul style="list-style-type: none">• For Voice dial, your mobile phone must support this function. (check the mobile phone manual)

CHARGING YOUR EARBUDS AND CHARGING POD:

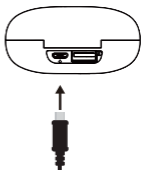
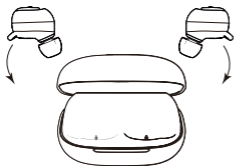
Fully charge the battery for 3-4 hours before using the earbuds for the first time, or when they have been unused for extended periods. The charging pod has a built-in Power Bank and is charged along with the earbuds. You can charge the earbuds by placing them into the charging pod without connecting to a power outlet.

1. Place the earbuds into the charging pod, the LED indicator on each earbud will flash when charging and turn off when fully charged
2. Connect one side of the supplied cable to the charging port of charging case and connect the other side to any USB power source. The Charging Pod will indicate its charging status by a flashing orange light.
3. When the device is fully charged, the LED will stop flashing.
4. To use your Charge Pod as a Power Bank to charge other device, connect a USB cable into the output port and connect the other end to the device you want to charge.



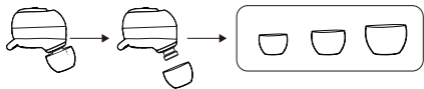
CHARGING STATUS

Earphones	LED will be disappears when fully charged
Charging Pod (Power Bank)	Orange LED light when fully charged



WEARING YOUR EARBUDS:

The earbuds come with comfortable silicone buds for your everyday use. Try all the different size earbuds that are provided in the package to find the best fit for your ears. You can get the best audio quality when the earbuds seal your ear canal.



NOTE: Your left and right ears may need different size earbuds. Insert the earbuds with the earbuds directed towards your ear canal. Twist gently until they fit comfortably and feel secure in your ears.



CONNECTING EARBUDS TO YOUR PHONE:

1. Take earphone from the charging pod to enter pairing mode.
2. Turn on Bluetooth® on your phone and select EFM TWS Valhalla to pair with this earphone.
3. When the earphones are not on the charging box, and earphones are power off. Press the MFB (multi-function button) on both earphones to turn on the earphones. The earphones will automatically enter pairing mode
4. After this earphone is successfully paired with your phone, TWS can remember up to three Bluetooth devices. You just need to repeat the above steps to pair with another Bluetooth device. The earbuds will only automatically connect with the last paired Bluetooth device.